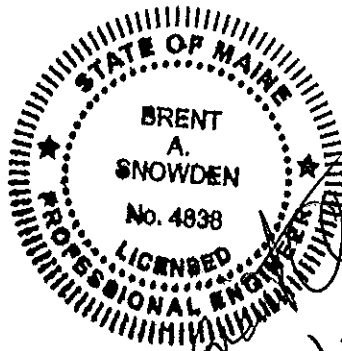


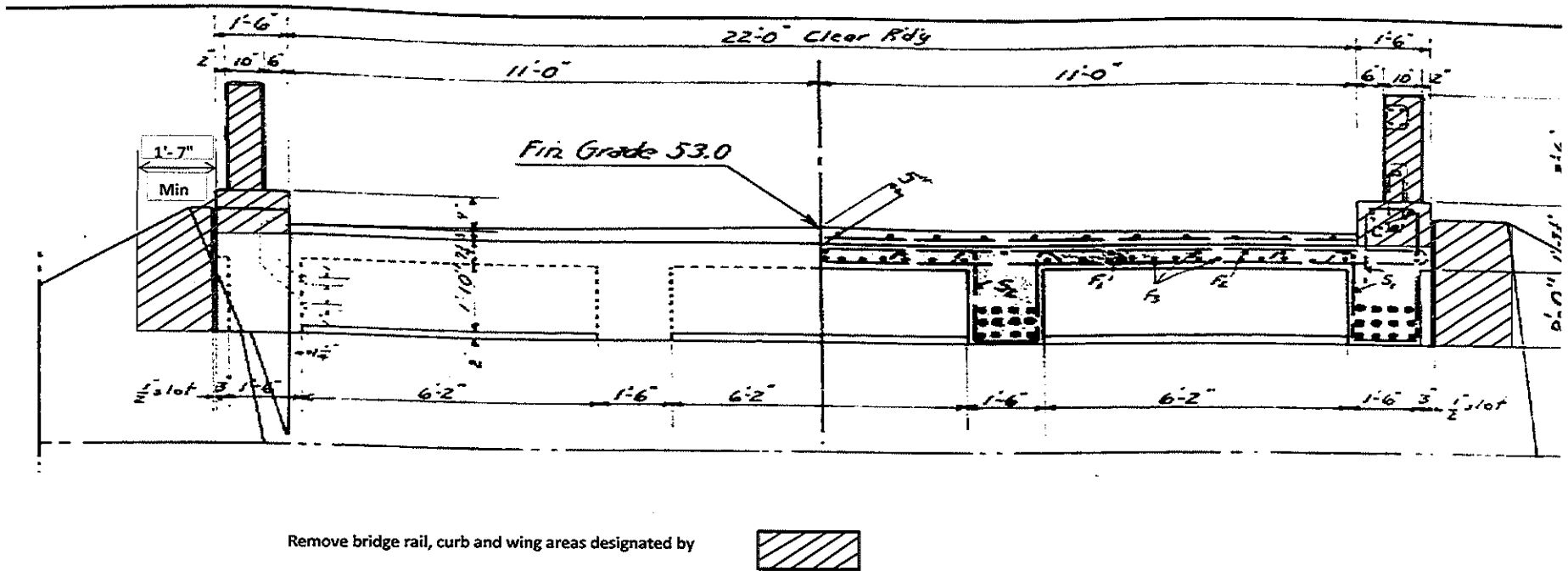
**NORTHFIELD
BOG STREAM BRIDGE
#3719**

BRIDGE WIDENING
CONCRETE T – BEAMS

Designed by:
Brent Snowden
January 14, 2015



**BOG STREAM BRIDGE # 3719 - NORTHFIELD - BRIDGE WIDENING
CONCRETE REMOVAL**

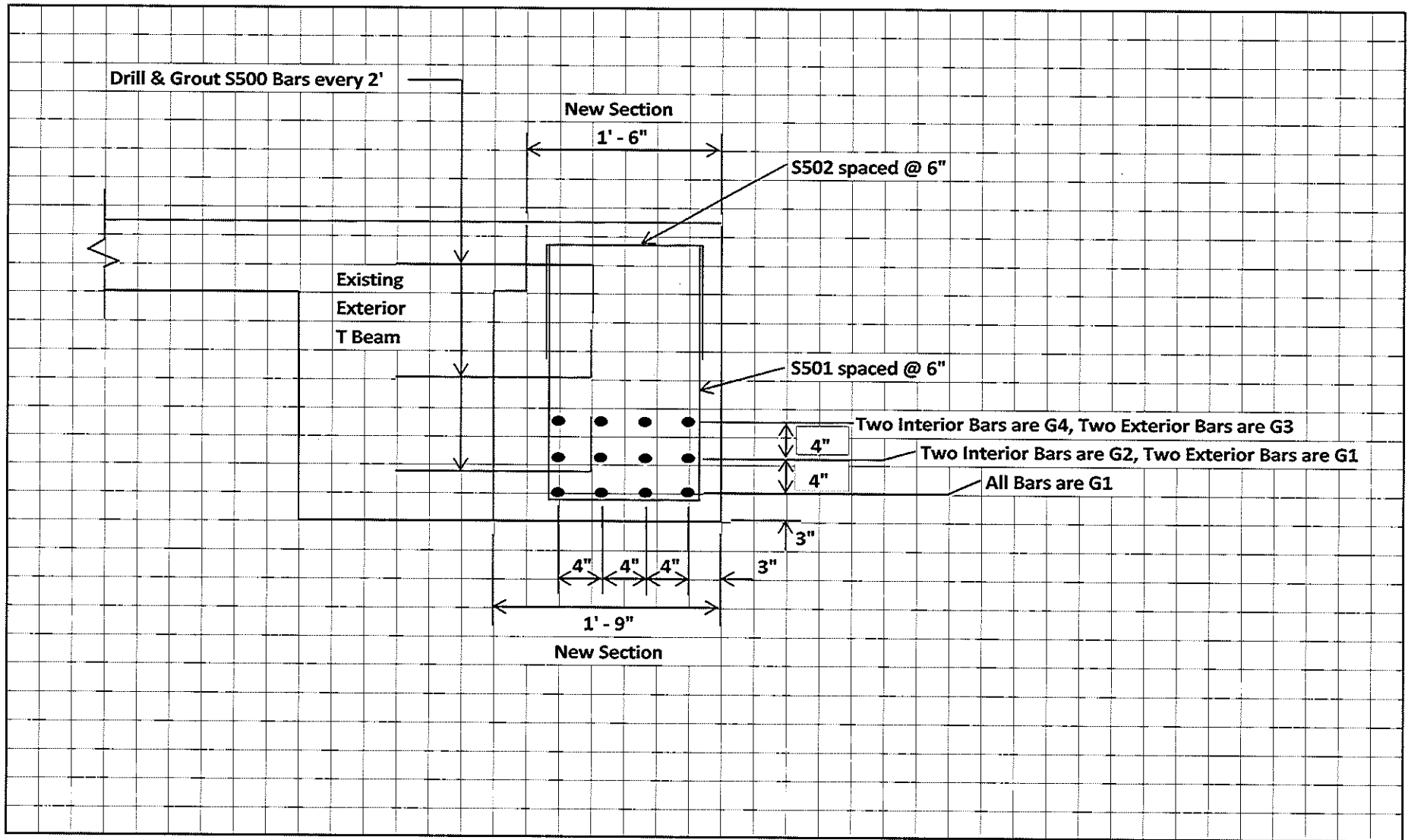


Technical drawing of a roof plan. The drawing shows a rectangular structure with various dimensions and labels. Key features include:

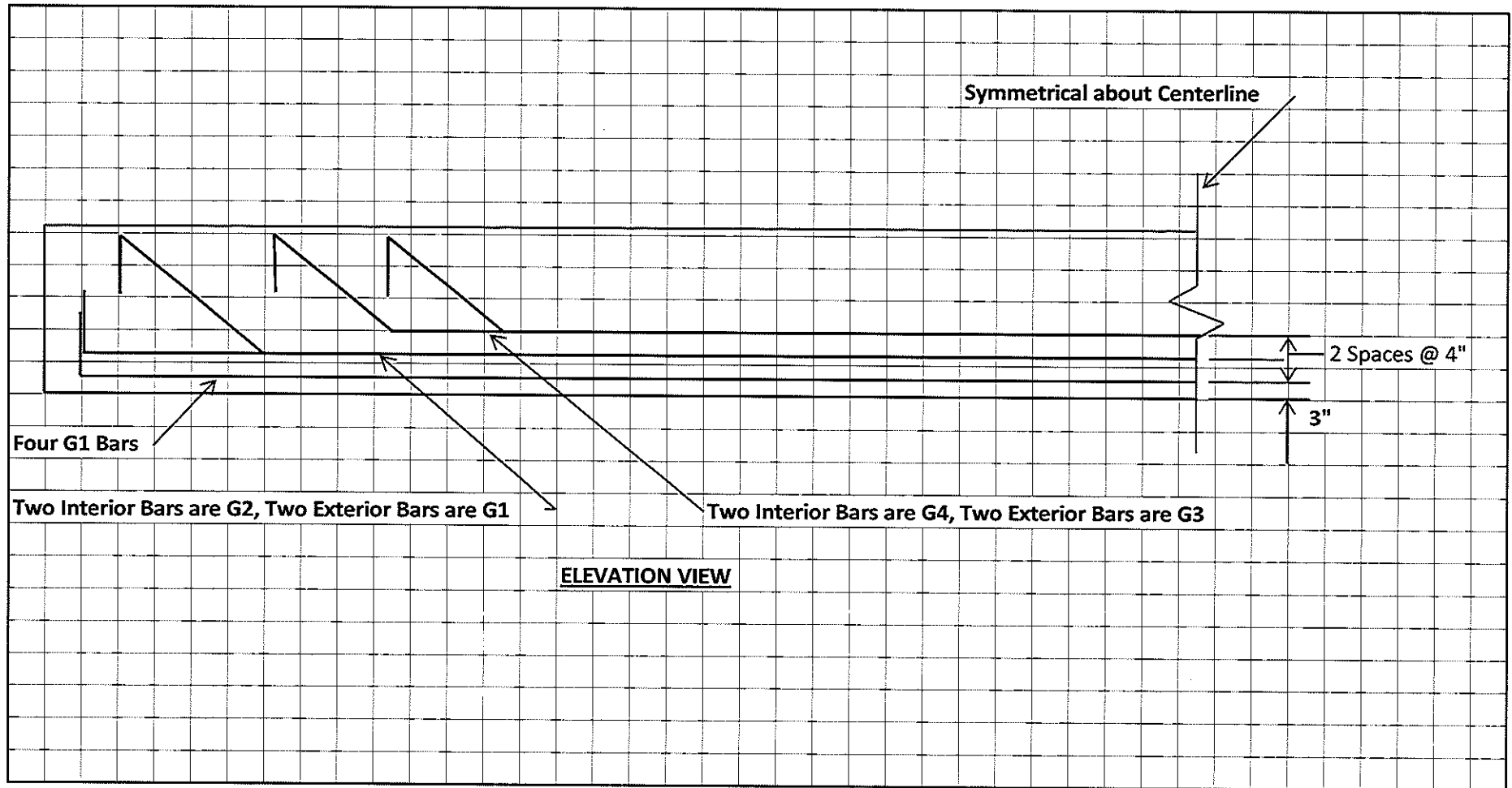
- Dimensions:**
 - Overall width: 22'-0" Clear Rdy.
 - Overall length: 1'-6" (left), 1'-6" (right), 6'-10 1/2" (center).
 - Internal length segments: 11'-0" (left), 11'-0" (right).
 - Internal width segments: 1'-6" (left), 6'-2" (left), 1'-6" (center), 6'-2" (right), 1'-6" (right).
 - Small square dimensions: 1'-0" (left), 1'-0" (right).
 - Small rectangular dimensions: 1'-6" (left), 1'-6" (right).
- Labels:**
 - Fin. Grade 53.0**: Points to a horizontal line across the middle.
 - Maine Rail**: Points to a vertical line on the right side.
 - 2 layers heavy roofing felt**: Points to a shaded area on the right side.
 - Spacer**: Points to a small rectangular area on the right side.
- Structural Details:**
 - Shaded areas representing walls or structural elements.
 - Various lines and arrows indicating dimensions and structural details.

- 1) Widen Exterior T Beam 1' - 6" Stem
- 2) Place spacer between widened T Beam section and Wing
- 3) Install Maine Rail on top of widened T Beam section
- 4) Place 2 layers of heavy felt rooming under widened T Beam section

BOG STREAM BRIDGE # 3719 - NORTHFIELD - BRIDGE WIDENING
WIDENED SECTION BOTH SIDES



**BOG STREAM BRIDGE # 3719 - NORTHFIELD - BRIDGE WIDENING
REINFORCING STEEL LAYOUT**



BOG STREAM BRIDGE # 3719 - NORTHFIELD - BRIDGE WIDENING

REINFORCING STEEL SCHEDULE

MARK	SIZE	QUANTITY	A	B	C	D	TOTAL LENGTH	LOCATION
S500	#5 Bar (5/8" Diameter)	100	18"	6"			2' - 0"	Fascia of Existing Exterior T Beams
S501	#5 Bar (5/8" Diameter)	122	2' - 4"	1' - 2"			5' - 10"	New widened T Beam Section
S502	#5 Bar (5/8" Diameter)	122	12"	1' - 2"			3' - 2"	New widened T Beam Section
G1	#9 Bar (1.128" Diameter)	12	12"	30' - 7 1/2"			32' - 7 1/2"	New widened T Beam Section
G2	#9 Bar (1.128" Diameter)	4	12"	1' - 11 1/2"	1' - 10 1/4"	25' - 3 1/2"	32' - 8 1/4"	New widened T Beam Section
G3	#9 Bar (1.128" Diameter)	4	12"	1' - 7 1/2"	1' - 6 1/4"	22' - 0 1/2"	28' - 6"	New widened T Beam Section
G4	#9 Bar (1.128" Diameter)	4	12"	1' - 7 1/2"	1' - 6 1/4"	18' - 9 1/2"	25' - 2 3/4"	New widened T Beam Section
			<u>G2, G3 or G4</u>					